

Efedra

Design: Ettore Palombini Siriani

Informazioni tecniche
Technical information
Informations techniques
Technische Auskünfte
Informaciones técnicas
Технические данные

Materiale: ottone stampato a caldo
Montaggio: sia singolo che a paia

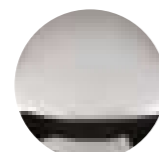
Material: forged brass
Assembly: either single o in pair

Produit de départ: presse à chaud laiton
Assemblage: singulier ainsi que à pair

Stoff: Messing warm gepresst
Zusammenbau: einzeln oder Paarweise

Material: latón estampado en caliente
Montaje: ya sea individual que por pares

Материал: латунь горячей штамповки
Сборка: как одиночная так и парная

**CR****CRS****NS**

Finiture in produzione
Finishes in production
Finissage en production
Feinbearbeitungen in Produktion
Acabados en fase de producción
Отделки

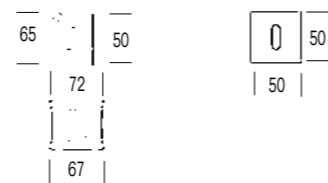


Pomoli

Door knob
Bouton
Türknopt
Perilla
Ручки-шары



6099

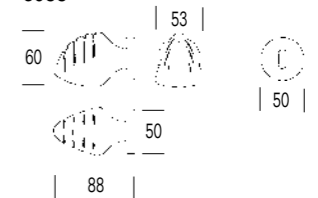


Papillon

Design: Studio Galeazzi & Associati



6055



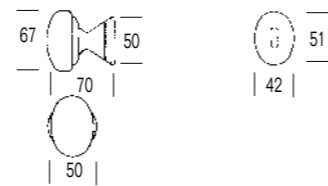
Timo

Design: Studio Sandini & Associati





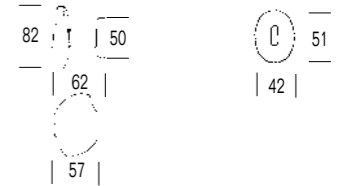
4879



Loto

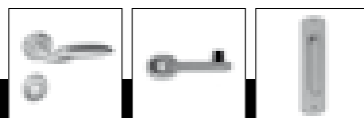
Design: Centro Ricerche Salice

14834



Efedra

Design: Ettore Palombini Sirani



pag. 75

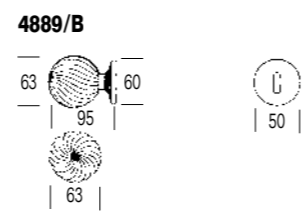
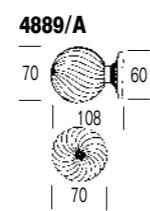
pag. 189

pag. 194

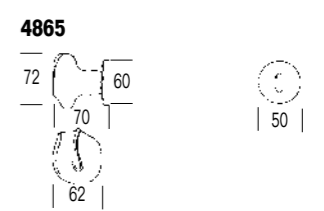


pag. 167

pag. 189



Cosmos
Design: Centro Ricerche Salice

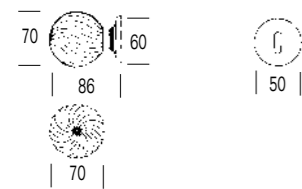


Nodo
Design: Centro Ricerche Salice

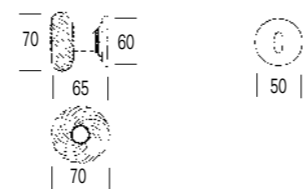




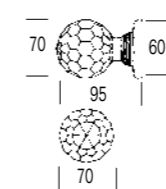
4817



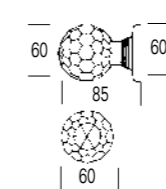
4817 bis



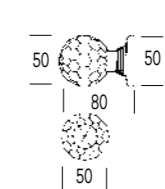
4485/A



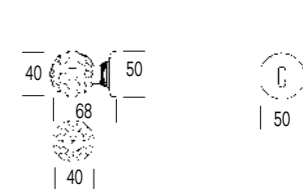
4485/B



4485/C



4485/D



Aster

Design: Centro Ricerche Salice



pag. 113

pag. 184

pag. 184

Arum

Design: Centro Ricerche Salice



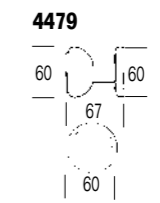
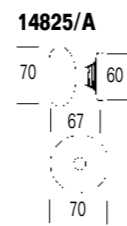
pag. 117

pag. 165

pag. 184

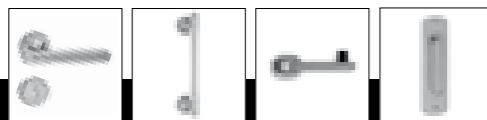
Sirio

Design: Centro Ricerche Salice

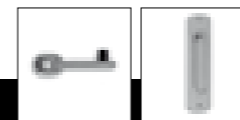


Mirto
Design: Centro Ricerche Salice

Ibisco
Design: Centro Ricerche Salice



pag. 127 pag. 165 pag. 189 pag. 194



pag. 189 pag. 194

Pomoli

Informazioni tecniche
Technical information
Informations techniques
Technische Auskünfte
Informaciones técnicas
Технические данные

Materiale: ottone stampato a caldo - ottone barra tornita
Montaggio: sia singolo che a paia

Material: forged brass - Turned Brass bar
Assembly: either single or in pair

Produit de départ: presse à chaud laiton - tournée barre laiton
Assemblage: singulier ainsi que à pair

Stoff: Messing warm gepresst - Gedreht Barren Messing
Zusammenbau: einzeln oder Paarweise

Material: latón estampado en caliente - latón barra torneada
Montaje: ya sea individual que por pares

Материал: латунь горячей штамповки - латунная точёная скоба
Сборка: как одиночная так и парная

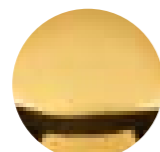
Finiture in produzione
Finishes in production
Finissage en production
Feinbearbeitungen in Produktion
Acabados en fase de producción
Отделки



CR



CRS



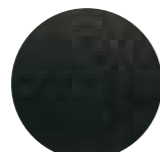
DOR 24K



NS



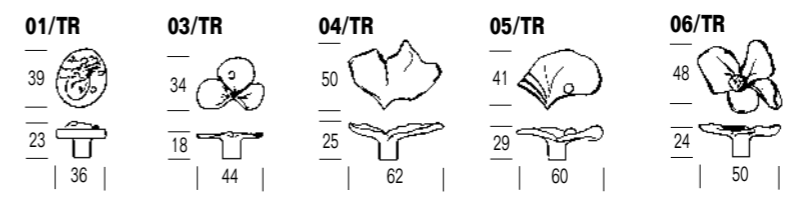
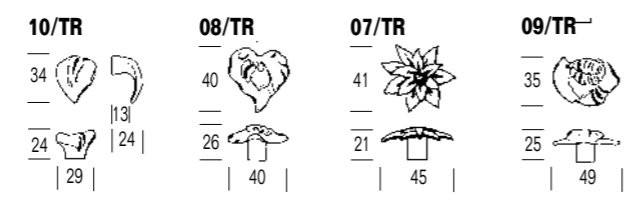
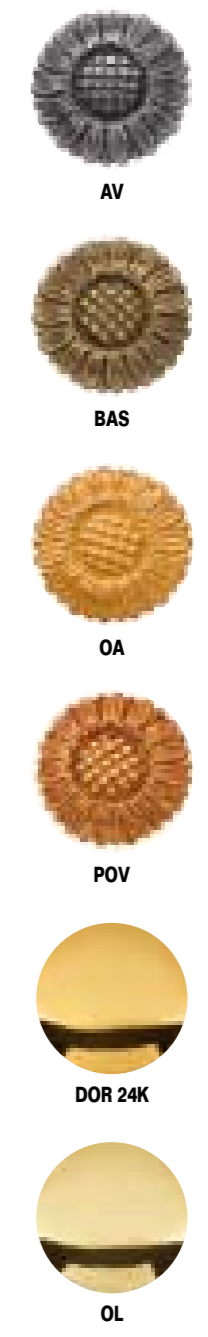
SB



SNO



Finiture in produzione
 Finishes in production
 Finissage en production
 Feinbearbeitungen in Produktion
 Acabados en fase de producción
 Отделки



Finiture in produzione
Finishes in production
Finissage en production
Feinbearbeitungen in Produktion
Acabados en fase de producción
Отделки



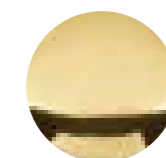
BP



CR



DOR 24K



OL

Pomoli in ottone
 Brass knobs
 Boutons en laiton
 Messing Knopf
 Perilla de latón
 Латунные ручки-шары

Pomoli in cristallo semi molato
 Half-grounded crystal knobs
 Boutons en cristal demi-meulé
 Halb-Geschliffener Kristall Knopf
 Perilla de cristal semi amolado
 Стекланные полуполированные ручки-шары

445 bis

Pomoli in vetro
 Glass knobs
 Boutons en vitre
 Glas Knopf
 Perilla en vidrio
 Стекланные ручки-шары

460

Pomoli in vetro
 Glass knobs
 Boutons en vitre
 Glas Knopf
 Perilla en vidrio
 Стекланные ручки-шары

461



425



428



472

